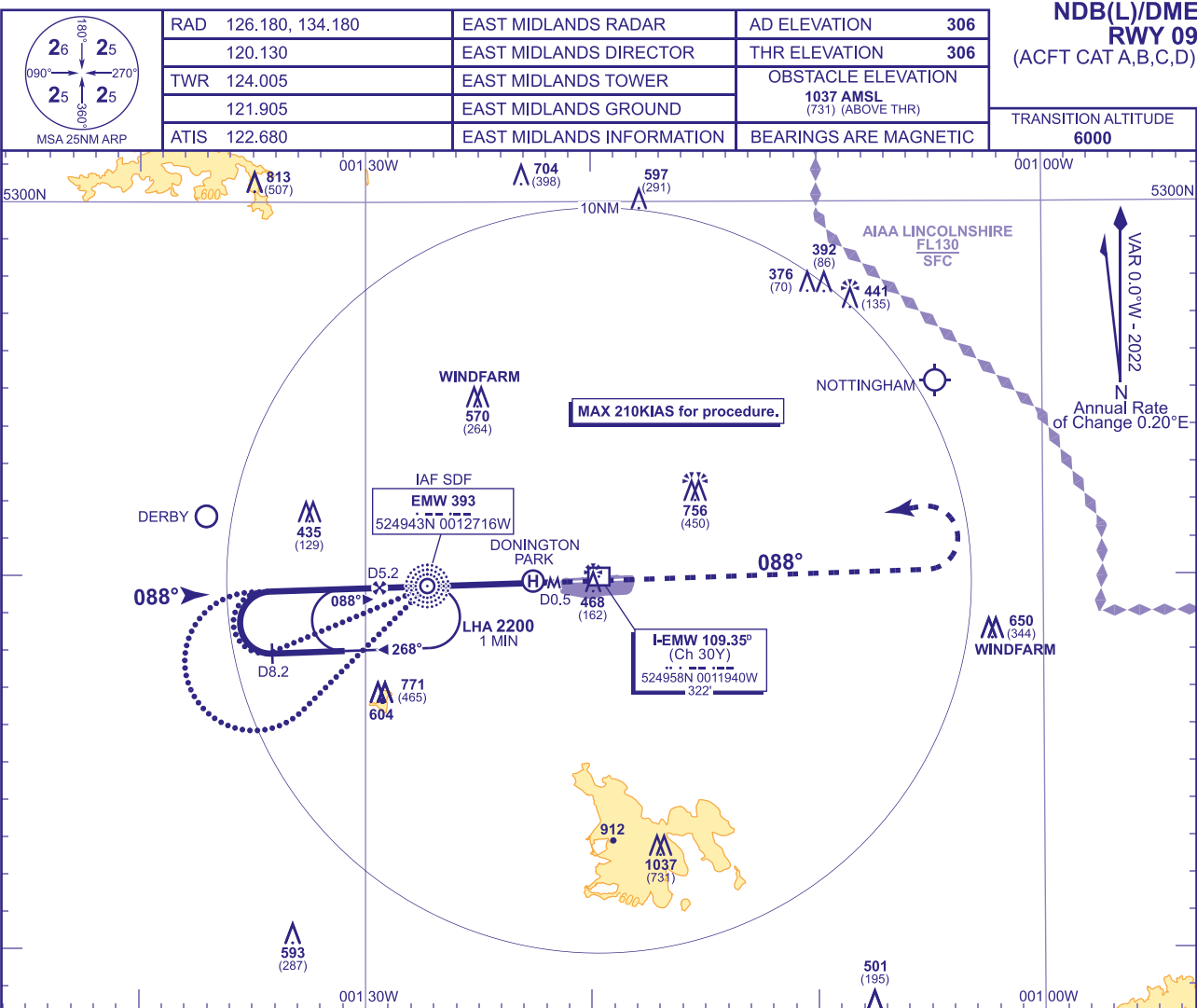
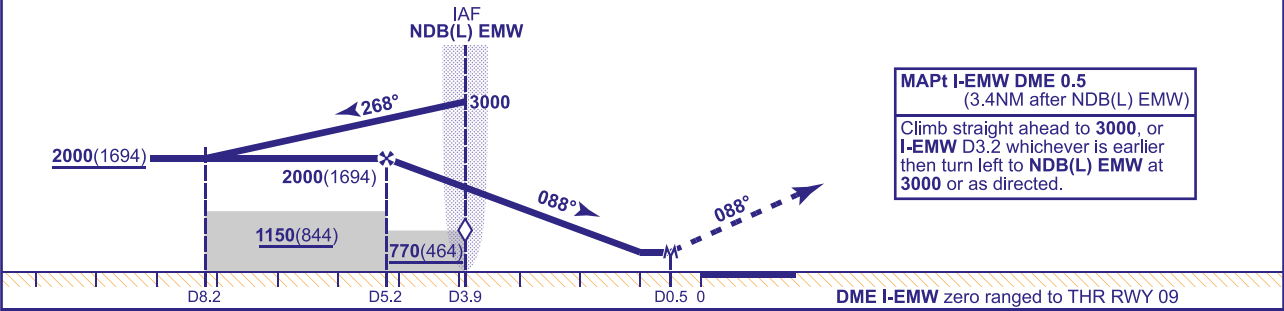


INSTRUMENT APPROACH CHART - ICAO

EAST MIDLANDS
NDB(L)/DME
RWY 09
(ACFT CAT A,B,C,D)



RECOMMENDED PROFILE Gradient 5.2%, 320FT/NM					
DME I-EMW	5	4	3.9 (SDF)	3	2
ALT (HGT)	1960(1654)	1640(1334)	1600(1294)	1320(1014)	1000(694)



Aircraft Category					Rate of descent	G/S KT	160	140	120	100	80
OCA (OCH)	Procedure	650(344)	650(344)	650(344)		FT/MIN	850	740	640	530	420
VM(C)OCA (OCH AAL)	Total Area	770(464)	800(494)	1160(854)							

ALTERNATIVE PROCEDURE
From overhead NDB(L) EMW **not below 3000**(2694) fly outbound on NDB(L) EMW QDR 248° (CAT A,B); NDB(L) EMW QDR 231° (CAT C,D), descending to **not below 2000**(1694). At I-EMW DME 8.2 baseturn right to intercept the FAT. Once established on the FAT continue as for main procedure.

NOTE 1 Lowest altitude to commence procedure from hold is **3000**.
2 Aircraft will normally be required to hold not lower than **3000**.